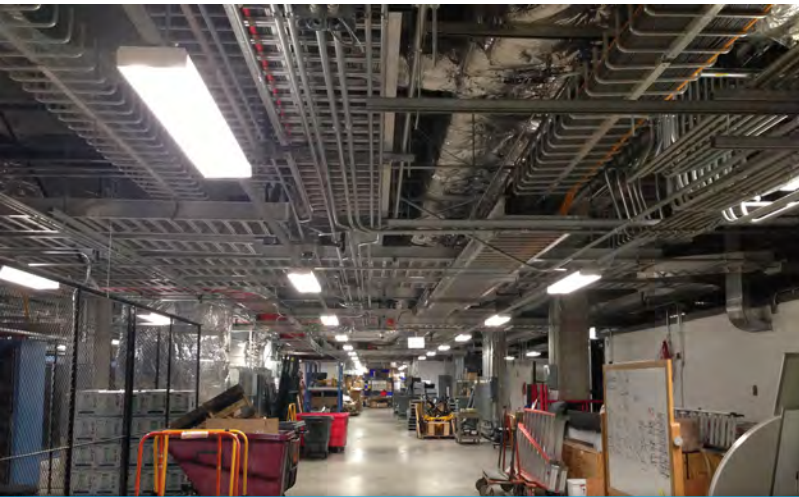


NEPTUN

L I G H T

CASE STUDY

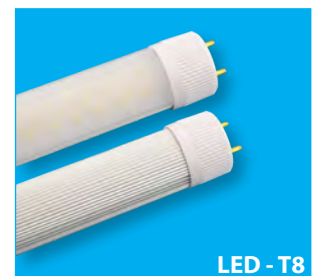
CME GOUP : CHICAGO, IL
LED & INDUCTION RETROFIT



<p>EXISTING SYSTEM:</p> <ul style="list-style-type: none"> * 100W Metal Halide * 32W Fluorescent T8 Tubes * 400W Mercury Vapor 	<p>SOLUTION:</p> <ul style="list-style-type: none"> * 50W LED Par56 Lamps * 20W LED T8 Tubes * 150W Induction Kit
--	---

Project Description

CME Group Inc. (Chicago Mercantile Exchange) is one of the largest options and futures exchanges and it owns and operates large derivatives and futures exchanges in Chicago and New York City, as well as online trading platforms. They came to **Neptun Light, Inc.** with the challenge of reducing overall power consumption and maintenance costs at their Chicago Board of Trade building in downtown Chicago, IL. With Neptun's wide range of energy efficient lighting products, they were able to utilize both LED and Induction technologies in the retrofit, providing the most cost effective solution and maintaining high quality lighting results.



	Main Trading Floor		Facilities		2nd Trading Floor	
	M.H.	LED	Fluorescent	LED	M.V.	Induction
Rated Wattage	100w	50w	32w	20w	400w	150w
Input Wattage	130w	51w	40w	20.5w	455w	162w
Life span	16,000 hrs	70,000 hrs	20,000 hrs	70,000hrs	16,000 hrs	100,000 hrs
No. of Fixtures	620	620	4200	4200	36	36
Running Time/Year	4,380 hrs	4,380 hrs	4,380 hrs	4,380 hrs	4,380 hrs	4,380 hrs
kWh Rate	\$0.07	\$0.07	\$0.07	\$0.07	\$0.07	\$0.07
Annual (kWh)	353,028	138,496	735,840	377,118	71,744	25,544
Annual (kWh) Savings		214,532		358,722		46,200
Annual Energy Costs	\$24,712	\$9,695	\$51,509	\$26,398	\$5,022	\$1,788
Annual Energy Savings		\$15,017		\$25,111		\$3,234

Overall annual energy savings = **\$43,362**

Total savings over life of product = **\$666,597**